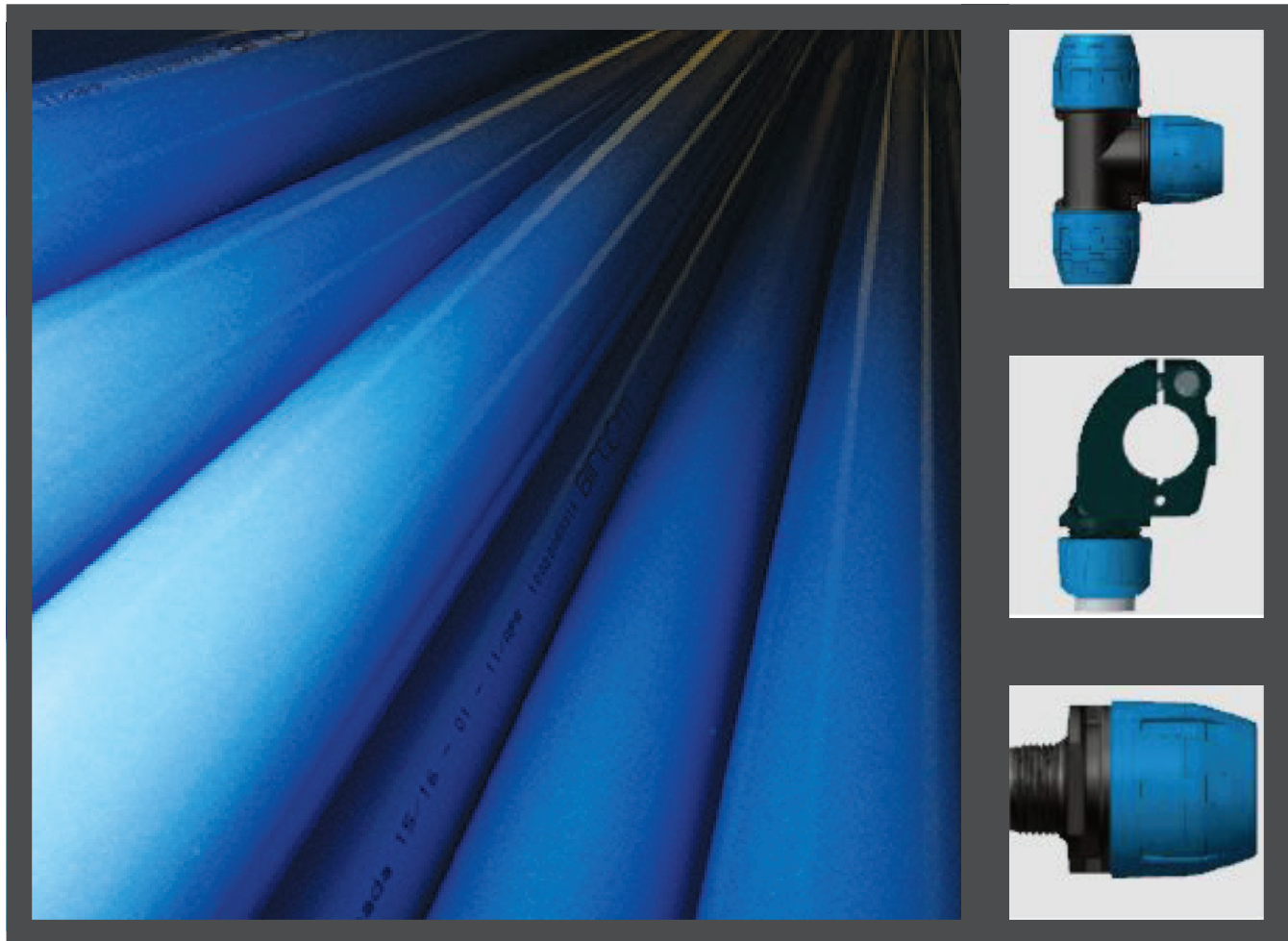


Modular Blue Piping

A094_0220

Blue Pipe Quickview

High quality, lightweight aluminum piping and accessories compliment our Perfect Air® line!
Easy to install, easy to change, no welding needed, this system helps reduce installation time and labor costs.



Understanding the Modular Blue Piping Part Numbering System

RTi +	P - Pipe	+	12 - 1/2"	Example:	
	NS - Nipple Socket		34 - 3/4"		90° Elbow in 1/2": RTI-E90-12
	PC - Socket Coupling		1 - 1"		1" Alum. Piping (20'): RTI-P1-20
	E45 - 45° Elbow		114 - 1 1/4"		
	E90 - 90° Elbow		112 - 1 1/2"		
	RT - Reducing Tee				



(800) 521-9200



www.driair.com | www.rti-pbe.com



@RTiPBE



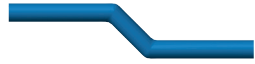
@rti_pbe



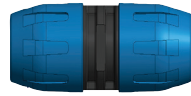
Below is just a small selection of the parts and accessories that are available from RTi...



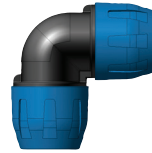
Aluminum Pipe



Double Bend Pipe



Socket/Coupling



90° Elbow



Straight 90° Elbow



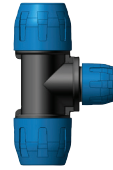
45° Elbow



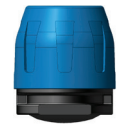
90° Tee - Equal Tee



Quick Branch Droplet



Reducing Tee



End Cap/Plug



Nipple Socket
NPT Thread



Nipple Socket NPT
Thread-Alum., Male



Nipple Socket FPT
Thread-Alum., Female



Single Port Wall Manifold
1/2" FPT with Ball Valve



Female 2 Port Wall Plate
Manifold



2 Port Wall Plate Manifold
Female Threaded



Female Ball Valve



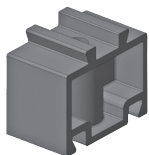
Flexible Expansion Hose



Quick Line Nut Wrench



Bracket M8 Thread
Insert Pieces



Bracket Wall Spacer



Beam Clamp



Chamfering Cone



Depth Gauge



STEALTH 1000B



STEALTH 1500B

CA PROPOSITION 65 WARNING



WARNING: Cancer and
Reproductive Harm
www.P65Warnings.ca.gov/product



(800) 521-9200



www.driair.com | www.rti-pbe.com



@RTiPBE



@rti_pbe

