

STEALTH 7500

A111_0918

Two-stage booth filter

Heavy duty combo filter for high flow, impact, and truck shops for painting



Features & Benefits

- Heavy duty booth filter with 3/4" regulator
- Features 3/4" inlet/outlet
- Automatic drain in first stage, brass manual petcock drain in second stage
- Rugged, heavy duty high-flow design
- All metal, corrosion-resistant anodized aluminum body on the regulator
- Tee handle knob, relieving type regulator
- Unit comes with BV-075 ball valve
- Does not come with bracket

Specifications

Max. Pressure	200 PSIG
Filter Capacity	0.01 micron at 99.99998% efficiency
Flow Capacity	150 SCFM at 100 PSI
Max. Operating Temp.	125°F
1st Stage Element	3P-150
2nd Stage Element	3C-150
Height	18"
Length	19.5"
Depth	5.25"
Weight (lbs.)	17.0

CA PROPOSITION 65 WARNING



WARNING: Cancer and Reproductive Harm
www.P65Warnings.ca.gov/product



(800) 521-9200



www.driair.com | www.rti-pbe.com



@RTiPBE



@rti_pbe



STEALTH 7500

A111_0918

Two-stage booth filter

Below are additional products that you can add on to your STEALTH 7500

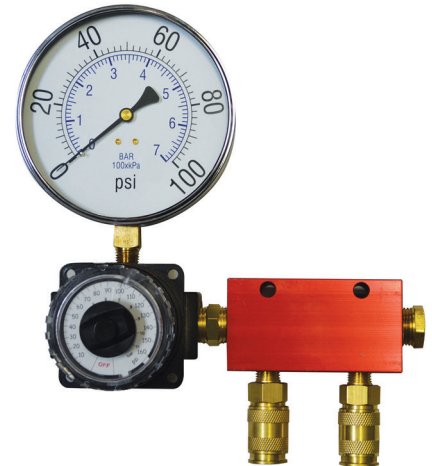
MA500-5 Features

- All metal, corrosion-resistant anodized aluminum body
- Four ½" outlets
- One ½" inlet
- Two ¼" mounting holes for rigid mounting to wall
- Can be outfitted with quick disconnects



R500DMP-LPM-G Features

- 0-100 PSI oversized gauge with glass face for quick, easy reading, and MA500-4 multiport manifold with quick disconnects
- Rapidly remove downstream pressure by turning adjustment knob
- Two (2) ¼" NPT gauge ports, usually used for additional outlets
- ½" NPT inlet/outlet ports
- Gauge is displayed in 2 lb. increments



MRAS-2XR Features

- 0-120 PSIG operating range for precision adjustment
- Large diaphragm provides constant pressure to gun
- ½" inlet and three ¼" quick disconnect outlets
- Chrome case 0-160 PSI gauge with glass lens
- Two additional full flow ½" NPT outlet ports available



CA PROPOSITION 65 WARNING



WARNING: Cancer and Reproductive Harm
www.P65Warnings.ca.gov/product



(800) 521-9200



www.driair.com | www.rti-pbe.com



@RTiPBE



@rti_pbe

