

2021 Edition



READING TECHNOLOGIES, INC.

AUTOMOTIVE REFINISH PRODUCT LINE

English



(800) 521-9200



www.rti-pbe.com



@RTiPBE



@rti_pbe

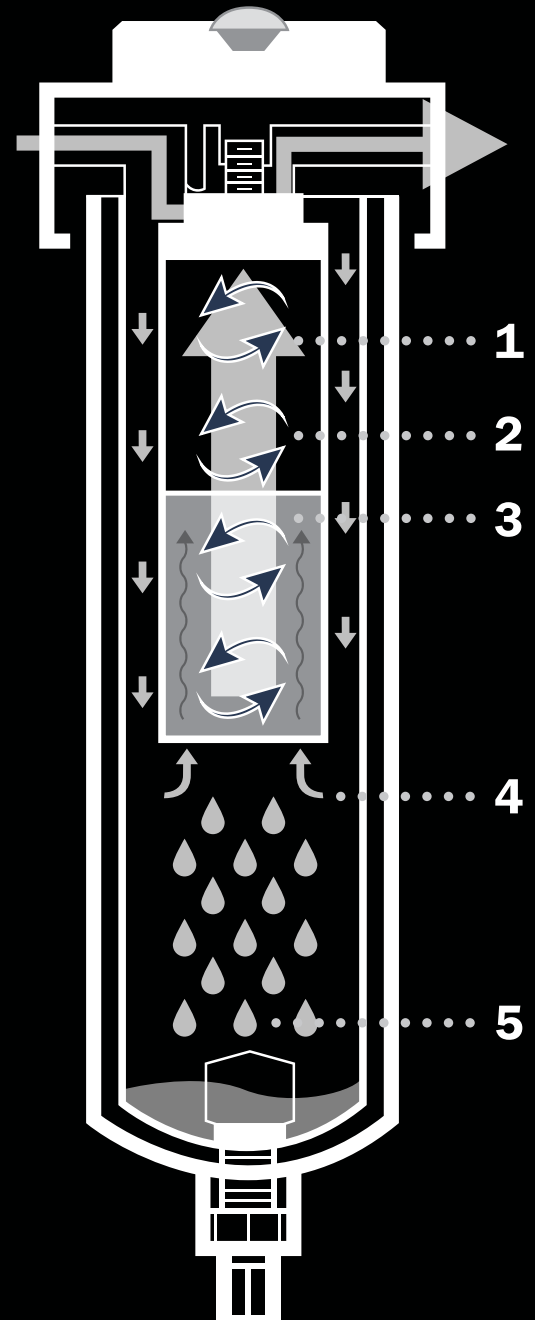
Why RTi?

Reading Technologies, Inc. has been at the forefront of advanced air system technology since 1986. Our innovations include compressor room desiccant and refrigerated dryers, mainline separators/coalescers, point-of-use dryers, and filter/regulator/lubricator units. Below is an explanation of how RTi uses its patented Inverse-Flow® Technology to give you the best clean, dry air for your painting needs.

The RTi brand prides itself on providing clean, dry air. Do you have specific requests? We build around your custom need. Call us to find out more: (800) 521-9200, or visit our website at www.rti-pbe.com.

INVERSE-FLOW® TECHNOLOGY

- 1 Centrifugal Spinning**
Water, dirt, and oil contaminants are spun in a downward circular motion through the air. The spinning action forces heavy particles outward, towards the drain.
- 2 Final Filter Media**
Our elements are composed of interwoven cotton, polyester, and stainless steel. The filter captures excess sub-micron water droplets. Cotton holds the water particles and allows them to re-enter the air stream as harmless vapor. *Filtration to 1.0 micron.*
- 3 Stainless Steel Element**
Pre-cleaned air enters a filter media composed of finely interwoven stainless steel mesh wires. The striated surface efficiently holds aerosols and liquid droplets, which then fall into the drain area. *Filtration to 3.0 micron.*
- 4 Inverse-Flow®**
RTi's Inverse-Flow® process creates a condition where the air, spinning in a downward circular motion, changes direction 180° and begins to flow vertically upward. The contaminants are not capable of reversing direction and must separate from the air flow. This process prevents re-entrainment of contamination, which can occur in other filter systems.
- 5 Bowl and Drain Options**
Bowls—metal or polycarbonate with metal guards.
Drains—automatic float, manual, zero loss, or electronic.



On The Cover:

“Modern Vintage” was inspired by 1920’s style board track racers and created by RTi sponsored artist Fred Green. Its custom-built frame was crafted with the help of Rods & Rides by TD and Tinworks Inc. Almost every part on the bike was handmade with help from Hix Design and Cooper Smithing. The custom mixed red PPG paint was hand made by Fred and the gold leaf artwork was done by Lucky strike designs - Jeremy Seanor. The paint job for “Modern Vintage” was applied using RTi products. It took Fred and his brother Steve over 5 years to complete. Photo credit: NotStock Photography



Table of Contents

Booth Products	4
Perfect Air Systems	4
Perfect Air System Add-ons	5
Eliminator II Series	6
Booth Products	7
Mainline Products	8
Twin Tower Desiccant Systems/Mainline Accessories	8
HD and Precision Regulators	9
Eliminex/Eliminex Combo Units/Coalescers	10
Cycling/Non-cycling Refrigerated Dryers	11
BRAD Systems	12
Breathing Air Systems	12
Breathing Air Systems Kits	13
DIY Tool Savers/Spray Applications	14
STEALTH Units	14
F/FR Series/Filter Comparison/Airline Contamination	16
Rebuild/Upgrade Kits	17
Perfect Air Maintenance/Rebuild Kits	17
Rebuild/Upgrade Kits	18
Accessories	19

****Corresponding Literature Sheets listed under certain items can be found on RTi's website at www.rti-pbe.com****

Perfect Air® Systems

Systems that provide consistently flawless finishes for waterborne and solvent base paints.

Features

- Consistent -40°F (-40°C) dew point to the gun
- For HVLP and conventional spray guns
- No upstream dryer required
- Self regenerating desiccant dryer requires less routine maintenance
- Change desiccant every 3-5 years
- Faster cure times - increased production
- Quiet operation
- Easy wall mount design with non-corrosive aluminum towers
- Eliminates dieback, cloudiness in clear finish, and more with 3% or less compressed air humidity (CAH) achieved



PERF-25

One painter desiccant dryer.

Replacement Elements:

- 1st stage: 3P-060
- 2nd stage: 3C-060
- 3rd stage: 3C-060

Available Kits:

- PERF-25-MK (elements only)
- PERF-25-RK (elements, desiccant, and fittings)
- PERF-25-TC (pre-packed desiccant towers and fittings)
- PERF-25-TCMK (elements, pre-packed desiccant towers, and fittings)

Literature Sheets: A042, A046, A047



PERF-50

Two painter desiccant dryer.

Replacement Elements:

- 1st stage: 3P-090
- 2nd stage: 3C-090
- 3rd stage: 3C-060

Available Kits:

- PERF-50-MK (elements only)
- PERF-50-RK (elements, desiccant, and fittings)
- PERF-50-TC (pre-packed desiccant towers and fittings)
- PERF-50-TCMK (elements, pre-packed desiccant towers, and fittings)

Literature Sheets: A042, A046, A048

Perfect Air® System Add-ons

Add-on accessories and kits to get the most out of your Perfect Air® systems.



PERF-25-MK



PERF-50-MK



PERF-25-RK



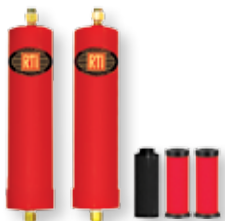
PERF-50-RK



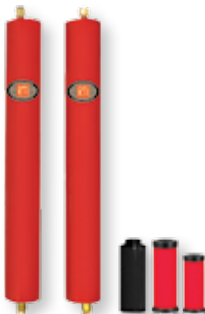
PERF-25-TC



PERF-50-TC



PERF-25-TCMK



PERF-50-TCMK

The PERF-25DDEMO is a great way to show shops the power of the PERF unit. It is a portable demo that is easily moved throughout shops where paint lines are being evaluated.



Available Kits

Maintenance and Rebuild kits that are available for the Perfect Air® units.

PERF-25:

PERF-25-MK, PERF-25-RK, PERF-25-TC, PERF-25-TCMK

PERF-50:

PERF-50-MK, PERF-50-RK, PERF-50-TC, PERF-50-TCMK

Literature Sheets: A067, A068

PERF-25DDEMO

This dolly-mounted demo unit is simple to get around, and set up is done in a matter of minutes. It includes the hand truck, mounting hardware for dryer, and fittings to attach the after filter to the dryer.

Note: The Perfect Air® 25 System is sold separately.

Some light assembly is required. Demo units without the blue piping may still be shipped.

Literature Sheet: A055

Eliminator II Series



E4000: .25in (6mm) regulator/gauge assembly and differential pressure indicator.

E4000-3R: .375in (10mm) regulator/gauge assembly and differential pressure indicator.

Replacement Elements:

- 1st stage: 4P-060
- 2nd stage: DE401

Literature Sheets: A002, A003



EH2500: .5in (13mm) inlet/outlet single stage desiccant dryer. Includes PB-004 mounting bracket.

Replacement Element:

DE401

Literature Sheets: A002, A006



EH4000: .25in (6mm) regulator/gauge assembly.

EH4000-3R: .375in (10mm) regulator/gauge assembly.

EH4000-4R: .5in (13mm) regulator/gauge assembly.

Replacement Elements:

- 1st stage: 4P-060
- 2nd stage: DE401

Literature Sheets: A002, A004, A005, A051



EH7000-3R: .375in (10mm) regulator/gauge assembly.

EH7000-4R: .5in (13mm) regulator/gauge assembly.

Replacement Elements:

- 1st stage: 4P-060
- 2nd stage: 3C-090
- 3rd stage: DE401

Literature Sheets: A002, A007, A052

Booth Products



STEALTH 1700B

.5in (13mm) inlet, .5in (13mm) regulator and gauge, multiport manifold, and couplers. Includes BK-1 mounting bracket, BV-051 ball valve.

Replacement Element: 3C-060

Literature Sheets: A024, A093



STEALTH 6060B

.5in (13mm) inlet dual-stage filter system with .375in (10mm) final regulator and first stage auto drain. It uses activated carbon to remove water, dirt, oil, oil vapor and includes two BK-1 mounting brackets.

Replacement Elements:

1st stage: 6960-1

2nd stage: 3C-060

Literature Sheets: A019, A024



STEALTH 7000B

.5in (13mm) inlet. Dirt and oil filter system. Filters to 0.01 micron and comes with .25in (6mm) regulator and gauge. Includes BK-1 mounting bracket.

Replacement Element: 3C-060

Literature Sheets: A023, A024

Corresponding Literature Sheets listed under certain items can be found on RTI's website at www.rti-pbe.com.



High Flow Couplers & Plugs

High quality brass construction suitable for high pressure applications. Available in .25in (6mm) and .375in (10mm).

Literature Sheet: A115



PH35C/PH50C

High flow 35ft (10m) and 50ft (15m) conductive spraying hose that's anti-static, lightweight, and flexible (comes with High Flow Coupler and Plugs).

Literature Sheet: A079



MR-1

Mini paint gun regulator with up to 30 scfm (850 l/min), 0-60 PSIG (0-4.08 Bar) operating range for precision adjustment, and features a .25in (6mm) inlet/outlet and chrome glass lens gauge.

Literature Sheet: A029

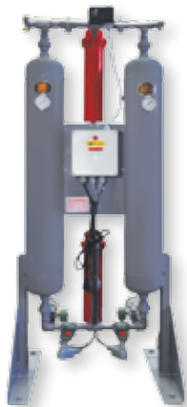


CV-02

Cheater valve with .25in (6mm) NPT and 0-60 PSIG (0-4.08 Bar) chrome glass lens gauge.

Literature Sheet: A039

Twin Tower Desiccant Systems



PERF-55HD

Mainline desiccant drying system that handles flow up to 15 HP compressors, delivers -40°F (-40°C) dew point air throughout shop, and comes complete with 0.01 micron pre and after filter.

Available Kit: PERF-55HD-MK
(replacement elements/mufflers)

Literature Sheet: A081



PERF-75HD

Mainline desiccant drying system that handles flow up to 30 HP compressors, delivers -40°F (-40°C) dew point air throughout shop, and comes complete with 0.01 micron pre and after filter.

Available Kit: PERF-75HD-MK
(replacement elements/mufflers)

Literature Sheet: A082



PERF-180HD

Mainline desiccant drying system that handles flow up to 50 HP compressors, delivers -40°F (-40°C) dew point air throughout shop, and comes complete with 0.01 micron pre and final filter.

Available Kit: PERF-180HD-MK
(replacement elements/mufflers)

Literature Sheet: A083

Mainline Accessories



ED-2-4

Electronic timer drain with indicator lights. Automatically drains water from tank and features a solid brass ball valve with stainless strainer to protect the valve. Manual override comes standard, fits .25in (6mm) or .5in (13mm) NPT.

Literature Sheet: A036



RTi-MGD

Mini magnetic drain uses magnetic level sensor to provide zero air loss operation. Corrosion resistant aluminum with .25in (6mm) inlet, .125in (3mm) outlet.

Literature Sheet: A100



TD5

Tank/drip leg automatic drain eliminates the daily manual draining and features a .5in (13mm) NPT inlet on top with a filter screen to protect the drain.

Literature Sheet: A037

HD Regulators

Features

- Metal, corrosion-resistant anodized aluminum body
- Tee handle knob
- Chemically resistant Buna N diaphragm
- See below chart for available port sizes
- Gauge included with units

- Maximum operating temperature: 175 °F / 79.44 °C
- Maximum supply pressure: 250 PSIG / 17.24 Bar

Part #	Flow Capacity (SCFM / l/min)	Adjusting Range Pressure (PSIG / Bar)	Port Size (NPT) (in / mm)	Weight (lb.)	Dimensions (in.) D x H	Dimensions (mm) D x H
R250HD-G	86 / 2435	10-130 / .7 - .9	.25 / 7	1.2	2.25 x 5.12	57.15 x 130.05
R380HD-G	100 / 2832	10-130 / .7 - .9	.375 / 10	1.2	2.25 x 5.12	57.15 x 130.05
R500HD-G	108 / 3058	10-130 / .7 - .9	.5 / 13	1.2	2.25 x 5.12	57.15 x 130.05
R750HD-G	175 / 4955	10-130 / .7 - .9	.75 / 19	3.2	3.75 x 6.75	95.25 x 171.45
R1000HD-G	300 / 8495	10-130 / .7 - .9	1 / 25	3.2	3.75 x 6.75	95.25 x 171.45
R1250HD-G	450 / 12743	10-130 / .7 - .9	1.25 / 32	3.9	4.00 x 6.75	101.60 x 171.45



Literature Sheet: A077

Precision Regulators

Corresponding Literature Sheets listed under items can be found on RTi's website: www.rti-pbe.com.



HPG-02S

Spray gun pressure analysis tool that is designed for applications where pressure is regulated on the wall. Supplied with 0-60 PSI (0-4.08 Bar) gauge in 1 lb. increments

Literature Sheet: A107

R4DG

0-100 PSI (0-6.9 Bar) oversized 4in (102mm) gauge with glass face for quick and easy reading. Rapidly remove downstream pressure by turning adjustment knob. Unit comes with .5in (13mm) NPT inlet/outlet ports. Gauge is displayed in 2 lb. increments.

Literature Sheets: A099, A108



R4DMG

0-100 PSI (0-6.9 Bar) oversized 4in (102mm) gauge with glass face for quick, easy reading, and MA500-4 multiport manifold with quick disconnects. Rapidly remove downstream pressure by turning adjustment knob. Unit comes with two (2) .25in (6mm) NPT gauge ports, usually used for additional outlets, and .5in (13mm) NPT inlet/outlet ports. Gauge is displayed in 2 lb. increments.

Literature Sheets: A101, A108

Mainline Products

Eliminex / Eliminex Combo Series

Eliminex Features

- Inverse-Flow design filters to 3.0 micron
- Innovative clamp ring design - No tools needed
- Automatic drains



EX104-B/EX204-B

60 scfm (1699 l/min),
.5in (13mm) NPT

Replacement Element: 1P-060

Replacement Elements (combo unit):

1st stage: 1P-060

2nd stage: 3C-060

Literature Sheet: A009



EX106/EX206

90 scfm (2549 l/min),
.75in (19mm) NPT

Replacement Element: 1P-090

Replacement Elements (combo unit):

1st stage: 1P-090

2nd stage: 3C-090

Literature Sheet: A009



EX108/EX208

150 scfm (4248 l/min),
1in (25mm) NPT

Replacement Element: 1P-150

Replacement Elements (combo unit):

1st stage: 1P-150

2nd stage: 3C-150

Literature Sheet: A009

Coalescers

Features

- 0.01 micron at 99.99998% oil removal efficiency
- Automatic drains
- Tool-less spin on/spin off elements
- Pre-filter for desiccant dryer, refrigerated dryer, or after filter for desiccant dryers
- Differential Pressure Indicator also available



C104-B

60 scfm (1699 l/min),
.5in (13mm) NPT

Replacement Element: 3C-060

Literature Sheet: A013



C106

90 scfm (2549 l/min),
.75in (19mm) NPT

Replacement Element: 3C-090

Literature Sheet: A013



C108

150 scfm (4248 l/min),
1in (25mm) NPT

Replacement Element: 3C-150

Literature Sheet: A013

Larger pipe sizes are available.
Consult factory for more information.

Cycling Refrigerated Dryers



Literature Sheet: A028

Part Number	Airflow (SCFM / l/min)	Standard Voltage	Nominal Absorption Power (kW)	NPT (in / mm)
RDX 0020	20 / 566	115V / 1Ph	0.21	.5 / 13
RDX 0030	30 / 849	115V / 1Ph	0.29	.75 / 19
RDX 0045	45 / 1274	115V / 1Ph	0.30	.75 / 19
RDX 0065	65 / 1841	115V / 1Ph	0.45	1 / 25
RDX 0090	90 / 2549	115V / 1Ph	0.70	1 / 25

***Larger sizes available. Call factory for more information.*

Cycling Refrigerated Dryer Specs

- 20-325 capacity (depends on model, other sizes available)
- Port sizes from .5in (13mm) to 2in (51mm)
- Max. Temp: 158°F / 70°C
- Pressure Dew Point: 39°F

Cycling Refrigerated Dryer Features

- Compact size for easy fit
- Automatic timer drain (with manual override)
- Low maintenance, long life design

For more information on Refrigerated Dryers and a complete parts list, call us at 800-521-9200.

Non-cycling Refrigerated Dryers



Literature Sheet: A027

Part Number	Airflow (SCFM / l/min)	Standard Voltage	Nominal Absorption Power (kW)	NPT (in / mm)
RDNC 0020	20 / 566	115V / 1Ph	0.21	.5 / 13
RDNC 0035	35 / 991	115V / 1Ph	0.29	.5 / 13
RDNC 0050	50 / 1416	115V / 1Ph	0.30	.5 / 13
RDNC 0075	75 / 2124	115V / 1Ph	0.45	1 / 25
RDNC 0100	100 / 2832	115V / 1Ph	0.70	1.25 / 32

***Larger sizes available. Call factory for more information.*

Non-Cycling Refrigerated Dryer Specs

- 20-100 capacity (depends on model, other sizes available)
- Port sizes from .5in (13mm) to 4in (102mm)
- Max. Temp: 158°F / 70°C
- Pressure Dew Point: 38°F / 3.33°C

Non-Cycling Refrigerated Dryer Features

- Compact size for easy fit
- Automatic timer drain (with manual override)
- Low maintenance, long life design
- On/off switch with multi-function display

Breathing Air Systems

Features

- Monitors Grade “D” breathable air
- Deep bed activated carbon pre-filter for hydrocarbon removal to 0.003 ppm
- 0.01 micron final filter designed for fine particulate and oil removal at 99.9998% efficiency
- Dual .5in (13mm) outlets with .25in (6mm) high flow quick disconnects

- Rated for up to 60 scfm (1699 l/min)
- Heavy duty, high flow regulator assembled with FDA lubricant
- 0-60 PSIG (0-4.1 Bar) mini-reg. controls air pressure to monitor
- Low air sample rate through monitor
- 110 Volt AC electrical
- Assembly is supplied mounted on .75in (19mm) board
- Radio frequency cancellation feature - if the monitor senses an RF signal, it will not alarm unless the signal lasts for 10 seconds or longer



BRAD-BD1-PRO

Portable BRAD-BD1 unit.

Replacement Elements:

- 1st stage: 4P-060
- 2nd stage: 3C-061

Literature Sheets:

A063, A064



BRAD-BD1

1-2 person pre-filter combo, CO monitor, .5in (13mm) HD regulator with 0-160 PSI (0-11 Bar) gauge, MR-1 mini regulator.

Available Kit:

BRAD-01C-MK

Literature Sheets:

A063, A064, A086



BRAD-BD2

2-6 person pre-filter combo, CO monitor, .5in (13mm) HD regulator with 0-160 PSI (0-11 Bar) gauge.

Available Kit:

BRAD-02C-MK

Literature Sheets:

A063, A064, A087



BRAD-CM3

CO Monitor.

Literature Sheets:

A063, A064



BRAD-9484

3-stage filter with .5in (13mm) heavy duty regulator, multiport manifold, two HFMC-1 couplers, and two BK-1 mounting brackets.

Literature Sheets:

A063, A064, A093

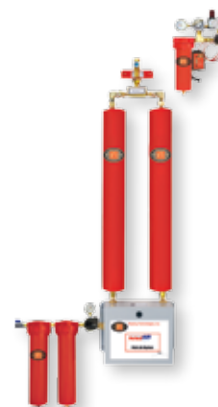


BRAD-4000C

Complete system package with desiccant, pre-filter combo, desiccant tower, CO monitor, operator kit (BRAD-OK-M1C-35).

Literature Sheets:

A063, A064, A119



BRAD-PERF

Breathing air units for Perfect Air® systems. Available for PERF-25 and PERF-50 units.

Literature Sheets:

A062, A063

Breathing Air Systems Kits



BRAD-M1C

Kit includes:

- Full Face Mask

The safest NIOSH approved air supply respirator mask design. Light weight with wide field of vision and over the shoulder air breathing tube. Meets OSHA standards [29CFR 1910.134(d)(1)].



BRAD-M2C

Kit includes:

- Full Flip up Face Mask

Convenient NIOSH approved air supply respirator mask. Meets OSHA standards [29CFR 1910.134(d)(1)].

BRAD-OK-M1C-35

Operator kit includes:

- Full face mask
- 35ft (10m) non-gassing hose assembly
- Flow control valve, belt assembly

BRAD-OK-M1C-50

Operator kit includes:

- Full face mask
- 50ft (15m) non-gassing hose assembly
- Flow control valve, belt assembly

Literature Sheets: A063, A064

BRAD-OK-M2C-35

Operator kit includes:

- Flip-up mask
- 35ft (10m) non-gassing hose assembly
- Flow control valve, belt assembly

BRAD-OK-M2C-50

Operator kit includes:

- Flip-up mask
- 50ft (15m) non-gassing hose assembly
- Flow control valve, belt assembly

Literature Sheets: A063, A064



BRAD-FCV

Flow control valve and belt assembly.

Literature Sheets: A063, A064



HVHA-B35C

35ft (10m) non-gassing hose assembly.

Literature Sheets: A063, A064



HVHA-B50C

50ft (15m) non-gassing hose assembly.

Literature Sheets: A063, A064

DIY Tool Savers/Spray Applications

STEALTH Units



STEALTH 6900B

.25in (6mm) inlet filters water and dirt with 1 micron final filtration. Includes BK-1 mounting bracket, BV-051 ball valve.

Replacement Element: 6950-1

Literature Sheets: A020, A024



STEALTH 6950B

.5in (13mm) inlet. Water and dirt filter system. Filters to 1 micron, comes with .25in (6mm) regulator and gauge. Also available with .375in (10mm) regulator (STEALTH 3050B). Includes BK-1 mounting bracket, BV-051 ball valve.

Replacement Element: 6950-1

Literature Sheets: A021, A024



STEALTH 6960B

.5in (13mm) inlet. Water, dirt, and oil filter system with .25in (6mm) regulator and gauge. Also available with .375in (10mm) regulator (STEALTH 3060B). Includes BK-1 mounting bracket, BV-051 ball valve.

Replacement Element: 6960-1

Literature Sheets: A022, A024



STEALTH 7500

.75in (19mm) inlet filters water, dirt, and oil with .75in (19mm) heavy duty regulator and gauge. Includes BV-075 ball valve.

Does not come with a BK-1 mounting bracket.

Replacement Elements:

1st stage: 3P-150

2nd stage: 3C-150

Literature Sheets: A024, A111



Vortex V104-BR

.5in (13mm) inlet. Water, dirt, and oil filter system. Filters to 1 micron with a .25in (6mm) regulator, gauge, and automatic drain. Includes BK-1 mounting bracket.

Replacement Element: 3P-060

Literature Sheet: A026

DIY Tool Savers/Spray Applications

STEALTH Units



STEALTH 1000B

.5in (13mm) inlet, .5in (13mm) regulator, 0.01 micron filter system with gauge, perfect for RTi's Modular Blue Pipe. Includes BK-1 mounting bracket, BV-051 ball valve.

Replacement Element: 3C-060

Literature Sheets: A024, A090



STEALTH 1500B

.5in (13mm) inlet, .5in (13mm) regulator, multiport manifold, heavy duty gauge, and couplers. Includes BK-1 mounting brackets, BV-051 ball valve.

Replacement Element: 3C-060

Literature Sheets: A024, A092



STEALTH 1700B

.5in (13mm) inlet, .5in (13mm) regulator, multiport manifold, and couplers. Includes BK-1 mounting bracket, BV-051 ball valve.

Replacement Element: 3C-060

Literature Sheets: A024, A093



STEALTH 3250B

.5in (13mm) inlet filters dirt and oil with a 0-100 PSI (0-9 Bar) oversized gauge and MA500-4 multiport manifold with quick disconnects. Includes BK-1 mounting bracket, BV-051 ball valve.

Replacement Element: 3C-060

Literature Sheets: A024, A108, A128



STEALTH 6060B

.5in (13mm) inlet dual-stage filter with .375in (10mm) final regulator. It uses activated carbon to remove water, dirt, oil, oil vapor and includes two BK-1 mounting brackets.

Replacement Elements:

1st stage: 6960-1

2nd stage: 3C-060

Literature Sheets: A019, A024



STEALTH 7000B/7800B

.5in (13mm) inlet. Dirt and oil filter system. Filters to 0.01 micron and comes with .25in (6mm) regulator and gauge. Includes BK-1 mounting bracket, BV-051 ball valve.

STEALTH 7800B does not include regulator and gauge.

Replacement Element: 3C-060

Literature Sheets: A023, A024

DIY Tool Savers/Spray Applications

F/FR Series Filters

Features

- .25in (6mm) or .5in (13mm)
- Adjustable 0-150 PSI (0-10 Bar) regulator
- Low pressure drop
- Can be wall mounted or panel nut
- Semi-automatic drain with manual override
- Filters to 5 micron
- Maximum pressure is 230 PSI (16 Bar)

- Temperature range from 40° F (4° C) to 120° F (49° C)
- 30 SCFM and 80 SCFM rating (850 & 2265 l/min)
- F Replacement Elements: F250-E, F500-E
- FR Replacement Elements: FR250-E, FR500-E

Literature Sheet: A030



**FR250-G/
FR500-G**



**F250/
F500**

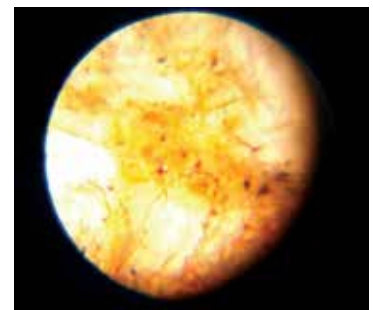
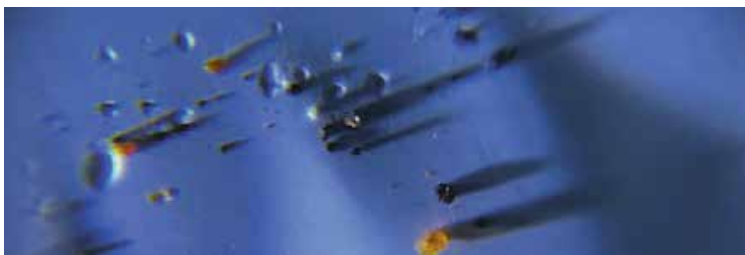
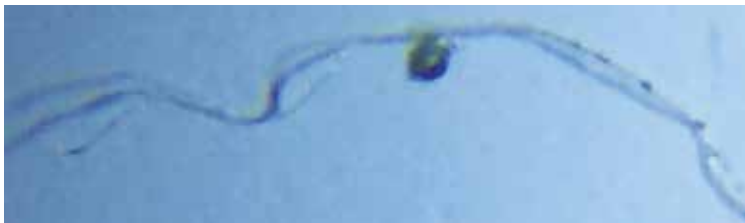
Filter Comparison



Elements are shown clear for demonstration only.

Air Line Contamination Examples

Examples of particulate found in air lines during an air audit.





Rebuild/Upgrade Kits

Perfect Air Maintenance/Rebuild Kits

For more on Maintenance/Rebuild/Upgrade kits, visit our website at www.rti-pbe.com or call 800-521-9200.



PERF-25-MK

Maintenance kit includes PERF-25 elements only.

Literature Sheets:

A067, A068, A074



PERF-25-RK

Repair kit for PERF-25. Needed every 3-5 years to re-pack desiccant.

Literature Sheets:

A067, A068, A074



PERF-25-TC

Pre-packed desiccant towers. Needed every 3-5 years.

Literature Sheet: A068



PERF-25-TCMK

Pre-packed desiccant towers, comes with replacement elements.

Literature Sheet: A068



PERF-50-MK

Maintenance kit includes PERF-50 elements only.

Literature Sheets:

A067, A068, A074



PERF-50-RK

Repair kit for PERF-50. Needed every 3-5 years to re-pack desiccant.

Literature Sheets:

A067, A068, A074



PERF-50-TC

Pre-packed desiccant towers. Needed every 3-5 years.

Literature Sheet: A068



PERF-50-TCMK

Pre-packed desiccant towers, comes with replacement elements.

Literature Sheet: A068

Rebuild/Upgrade Kits

Modern
VINTAGE

Rebuild/Upgrade Kits/Accessories



RT-676-RK
Rebuild kit for competitor system.

Literature Sheets:
A061, A074



RT-676-UG
Upgrade kit for competitor system.

Literature Sheet: A061



RTi-D500-RK
Rebuild kit for competitor system.

Literature Sheets:
A061, A074



RTi-D500-UG
Upgrade kit for competitor system.

Literature Sheet: A061



RTi-D500-UG2
Upgrade kit for competitor system.

Literature Sheets:
A061, A074



RTi-T10-RK
Rebuild kit for competitor system.

Literature Sheets:
A061, A074



RTi-T10-UG
Upgrade kit for competitor system.

Literature Sheet: A061



NB-30
Replacement desiccant element for competitor system.

Literature Sheet: A031



RT30-KIT
Replacement desiccant elements/indicator for competitor system.

Literature Sheet: A061



D-05
5lbs. loose activated alumina desiccant (Also available in 50lbs: D-50).

Literature Sheet: A074



MRAS-2XR
Multi-regulator air station (w/o quick disconnects: MRAS-2XRL).

Literature Sheet: A069



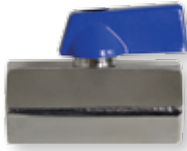
RTi-SAF-0, -1, -2
Change out elements for competitor units.

Literature Sheet: A122

Available Accessories



BK-1
Mounting bracket.



BV-050
.5in (13mm) chrome ball valve.



BV-051 / BV-075
.5in (13mm) ball valve,
.75 (19mm) ball valve.



CV-02
Cheater valve with gauge.



EH-STAND-2
Demo stand for EH units.



HPG-02S
.25in (6mm) Straight-thru assembly with gauge.



LTC-017
Shuttle valve.



MA500-4/MA500-5
.25in (6mm) and .5in (13mm) multiple outlet manifold.



N32-95-979
Automatic float drain.



N32-W1-DPi
Differential pressure indicator.



PB-C
High flow pencil blower.



PG-160
.125in (3mm) 0-160 PSIG (0-10.89 Bar) gauge.



PG-160-1.5CB
0-160 PSIG (0-10.89 Bar) gauge.



PH4C/HS-04-04 Hose
.25in (7mm) x 4ft (1m)
.5in (13mm) x 4ft (1m)



RG25
.25in (6mm) regulator and gauge assembly.



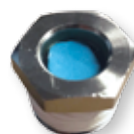
RG30
.375in (10mm) regulator and gauge assembly.



RG40
.5in (13mm) regulator and gauge assembly.



RTi-QAT
Air quality test kit. Repl. filter disks: RTi-QATMD (10 pack).



RTi-SG-651
.5in (13mm) sight glass with humidicator paper.



RTi-SY9540
PERF solenoid valve.



v2.0 12/2020



(800) 521-9200



www.rti-pbe.com



@RTIPBE



@rti_pbe